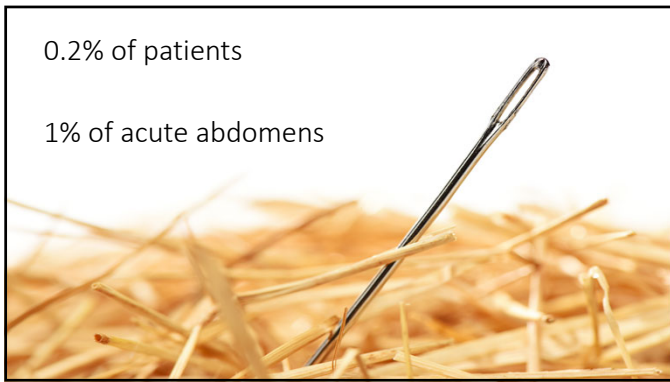


1



2



3



4



5

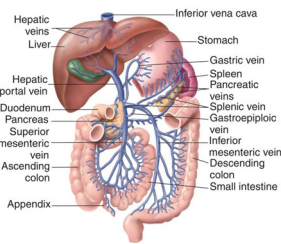
**AMI: Acute (Arterial) Mesenteric Ischemia**

- Acute embolus
  - 40%
- Acute thrombus
  - 40%
- Non-occlusive
  - ~10%
- Partial
  - ~10%

6

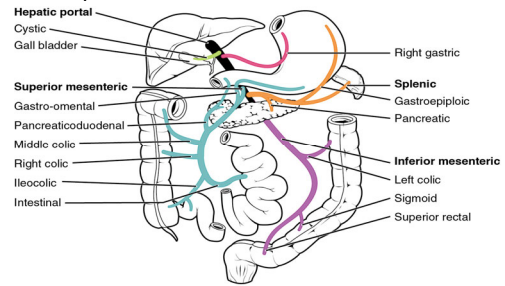
### Venous occlusion

- Unclear incidence ~2%
- Lower morbidity/mortality
- Look for hypercoagulability
- ~2 days of pain before presentation
- CT is good (~90% accuracy)
- MRI is better
- Treat with anti-coagulation



7

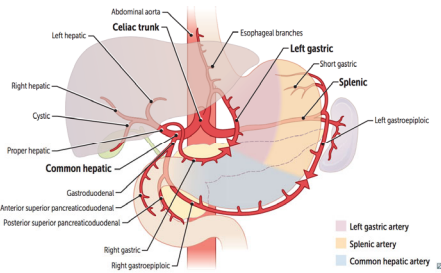
### Anatomy:



8

### Celiac:

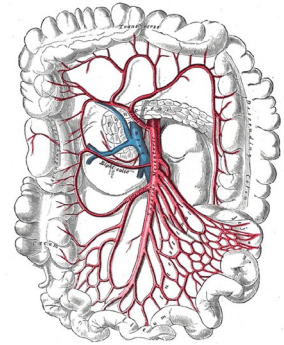
- Rarely affected
- Branches
  - Gastric
  - Splenic
  - Hepatic



9

### Superior Mesenteric:

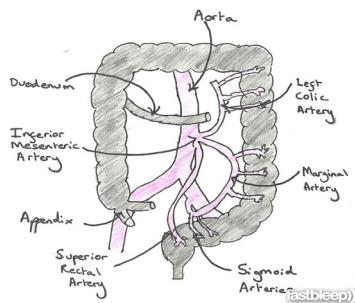
- Most commonly affected
- 45 degree takeoff
- Branches:
  - Inferior pancreaticoduodenal artery
  - Left-sided
    - jejunal branches
    - ileal branches
  - Right-sided
    - ileocolic artery
    - right colic artery
    - middle colic artery



10

### Inferior Mesenteric:

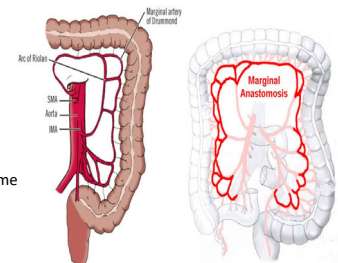
- Small caliber
- L sided blood supply to bowels
  - left colic artery
  - two to four sigmoid arteries
  - superior rectal artery (terminal branch)
- Rarely involved



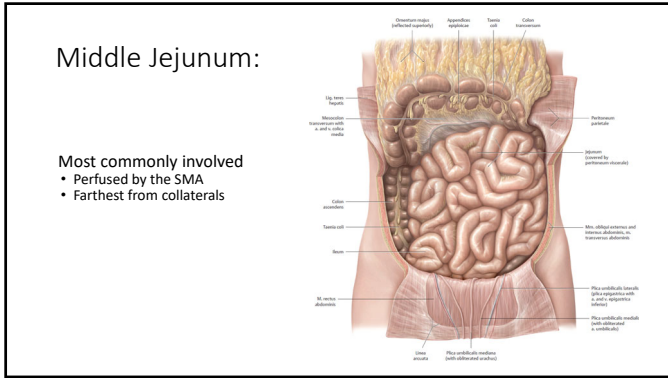
11

### Collaterals

- Marginal artery of Drummond
  - SMA to IMA
- Arc of Riolan
  - Only seen about ~10% of the time



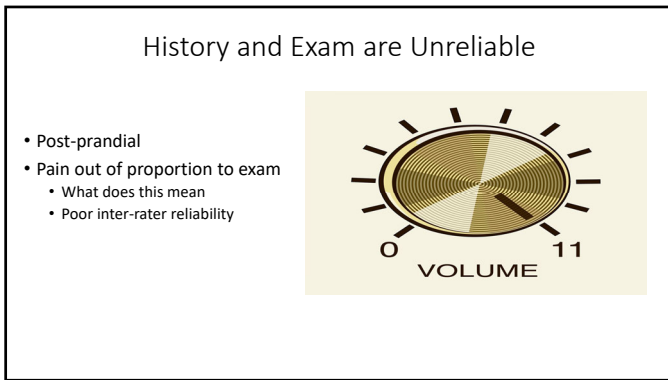
12



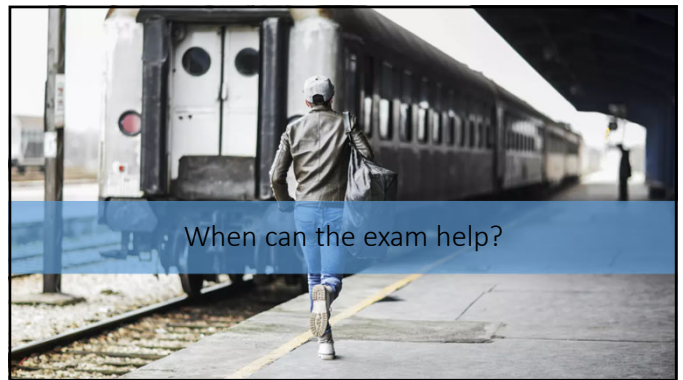
13



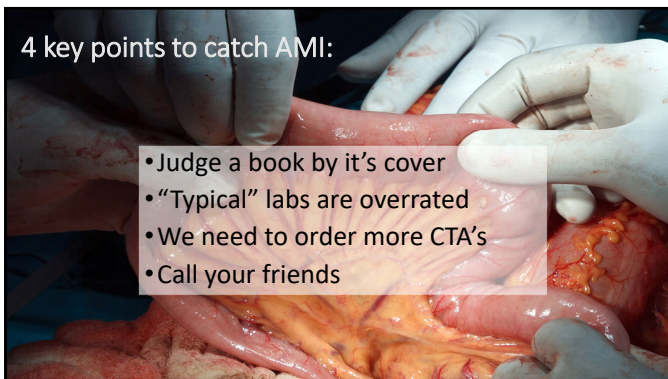
14



15



16




17



18

Are you likely to form clots?


- MI
- PAD
- CVA
- Previous PE/DVT



19

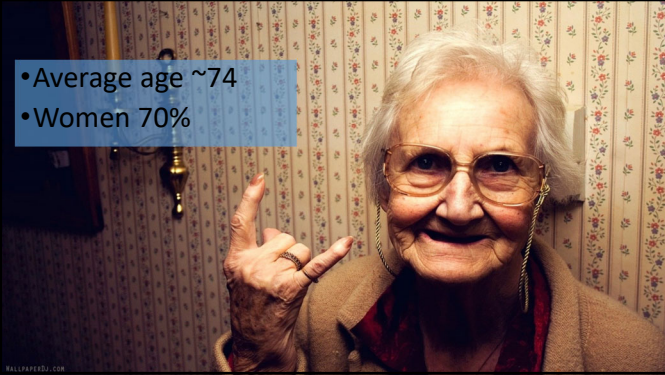
Dysrhythmia:

~50% with AMI have a-fib



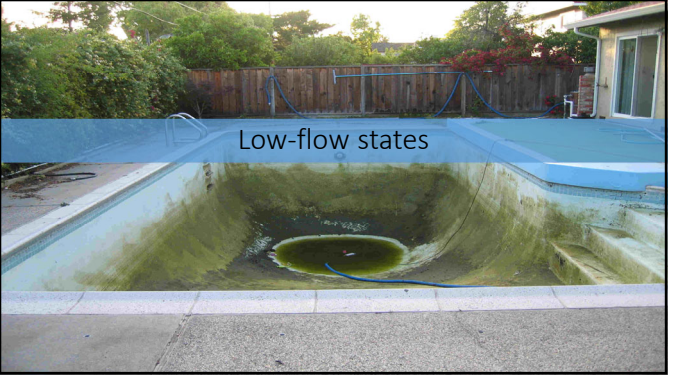
20

- Average age ~74
- Women 70%



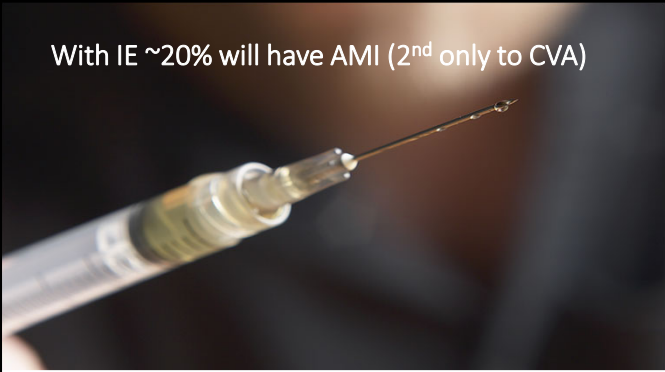
21

Low-flow states



22

With IE ~20% will have AMI (2<sup>nd</sup> only to CVA)



23

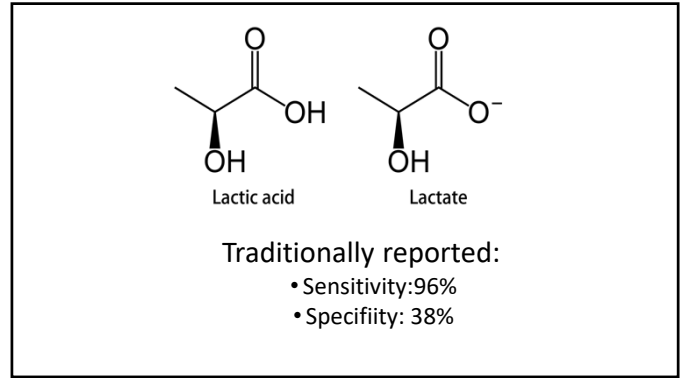
Usually week 2-4 after starting abx.



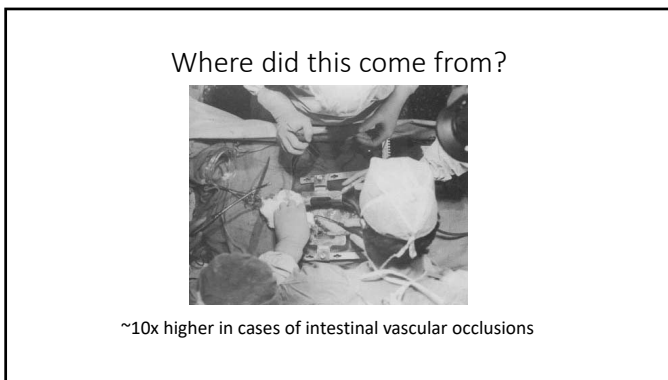
24



25



26



27

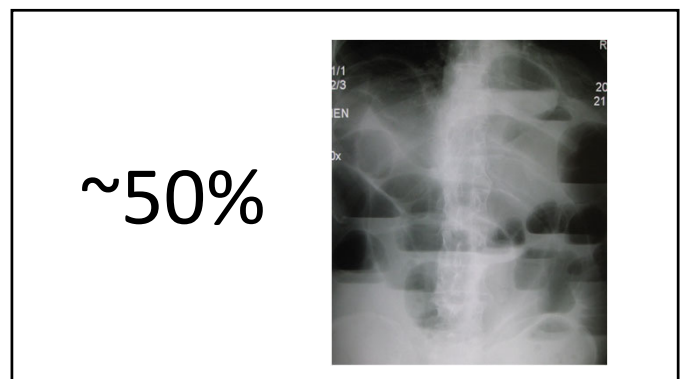
Animals Studies: Early missteps:

- *Lactate is specific to SMA*
- *Gut hypo-perfusion releases lactate*
- *Lactate is helpful early*

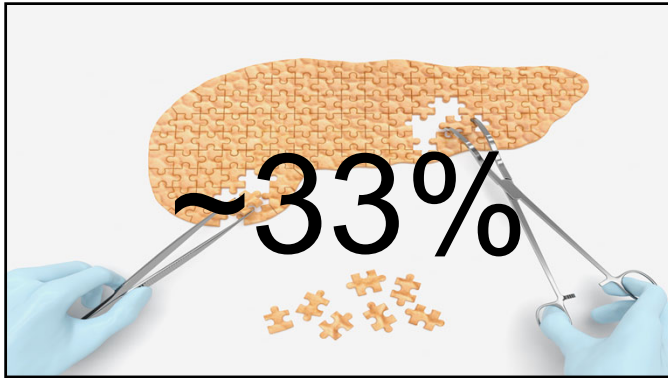
28



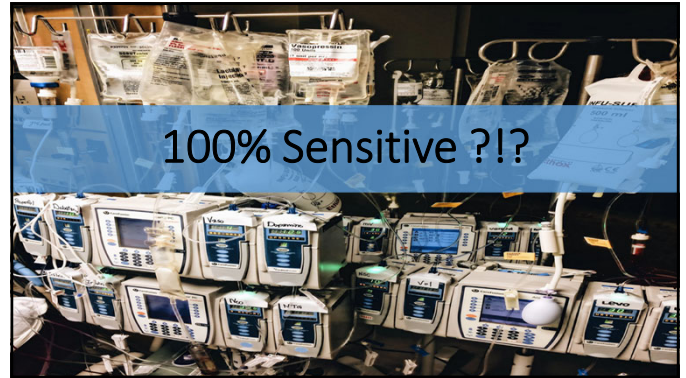
29



30



31



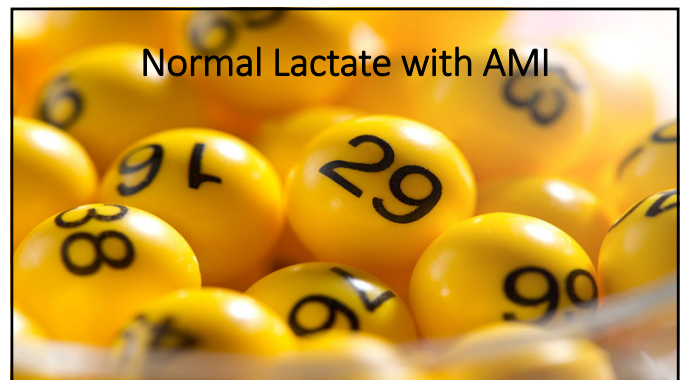
32

**Erratic Sensitivity**

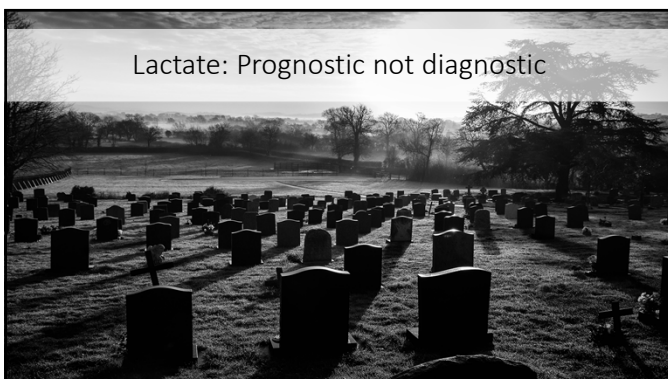
TEST	WERT	UNIT	REFE
große	13		
kleine	14		
HEATC	15		
Blutbild	16		
Blutbild (Autoantikörper)	17		
Cholesterin	18		
Cholesterin-MIB	19		
CRP	20		
CK	21		
CK-MB	22		
CK-MB-AB	23		
CK-MB-T	24		
CK-MB-T-AB	25		
CK-MB-T-T	26		
CK-MB-T-T-AB	27		
CK-MB-T-T-T	28		
CK-MB-T-T-T-AB	29		
CK-MB-T-T-T-T	30		
CK-MB-T-T-T-T-AB	31		
CK-MB-T-T-T-T-T	32		
CK-MB-T-T-T-T-T-AB	33		
CK-MB-T-T-T-T-T-T	34		
CK-MB-T-T-T-T-T-T-AB	35		
CK-MB-T-T-T-T-T-T-T	36		
CK-MB-T-T-T-T-T-T-T-AB	37		

(12/27) AMI had normal lactate

33



34



35

**D-Dimer:**

- It works for other clots
  - PE
  - DVT


36

D-Dimer in AMI: **Yes**

**SMA ligation**

- D-dimer checked at hour 1/2/3
- D-dimer > 0.125 ng/l
  - 36x increase in rate of AMI

Coskun et al. 2017




37

D-Dimer in AMI: **No**

- Ex-lap:
  - SMA seen
  - SMA manipulated
  - SMA ligated
- D-Dimers and lactate at hour 1/4/6
  - D-dimer didn't help early
  - Lactate was helpful at 4 hours.

Aydin et al. 2015



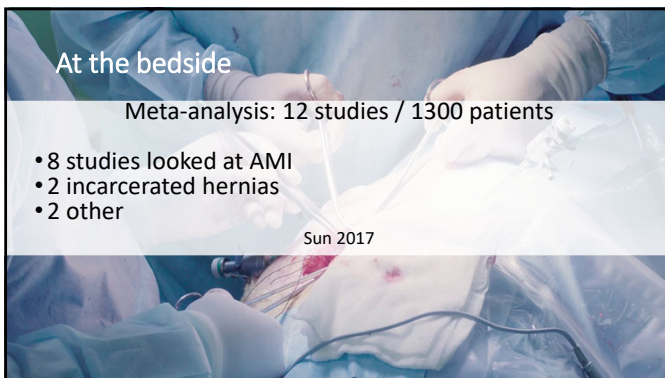
38

At the bedside

Meta-analysis: 12 studies / 1300 patients

- 8 studies looked at AMI
- 2 incarcerated hernias
- 2 other

Sun 2017



39

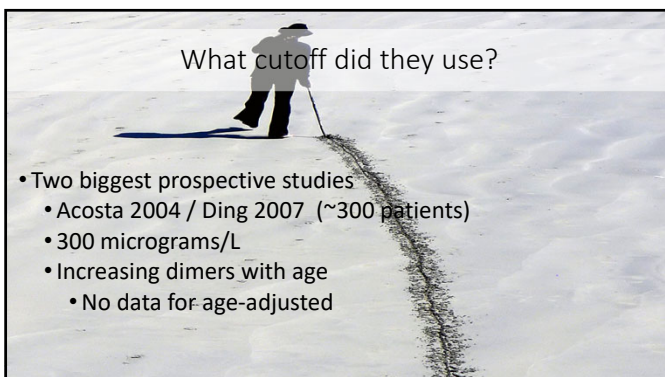
- Sensitivity: 94%
- Specificity: 50%
- + LR: 1.9
- - LR: 0.12



40

What cutoff did they use?

- Two biggest prospective studies
  - Acosta 2004 / Ding 2007 (~300 patients)
  - 300 micrograms/L
  - Increasing dimers with age
    - No data for age-adjusted

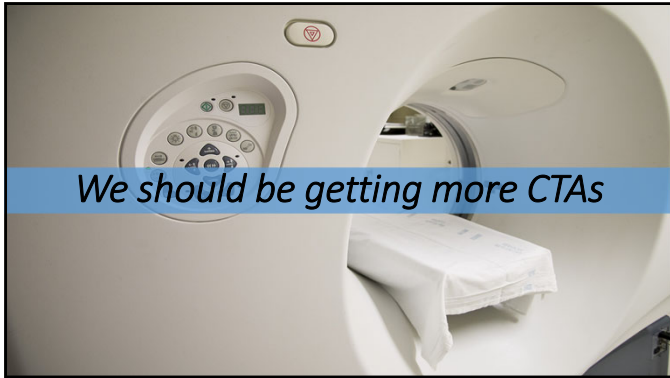


41

Labs in AMI

- Lactate is not helpful early
  - Becomes more accurate after 4 hours
- D-dimer < 300 a/w decreased likelihood of AMI
  - Not clear how well this performs early
  - Only use with low pre-test probability

42



43



44

### Ultrasound

- Good specificity for proximal occlusions/stenosis
- Poor sensitivity
- May be helpful as POCUS
  - Quick answer if +
  - Rule out other stuff.

45

### MRI/MRA

- Fairly accurate
- Issues with access/speed

46

### CTA

- Non-contrast scan
  - Likely adds little
- One contrast bolus
  - Two scans
    - Arterial Phase (Vascular)
    - Venous phases (Bowel)
- Multi-plane reconstructions

47

### CTA vs. CT

- A little more radiation (arterial and venous phases)
  - 1-10 mSV per scan (3mSV is background yearly dose)
- A little more contrast
  - 100cc bolus
- A lot more accuracy
  - Arterial phase
  - Venous phase

48



CTA Performance:

Bowel wall thickening: 88%/70%

- Most common finding
- Hypo-enhanced bowel wall
  - "pale ischemia"



49



Vascular occlusion: 12-25% / 94-100%

50

Bowel + Vasculature: ~97%/100%

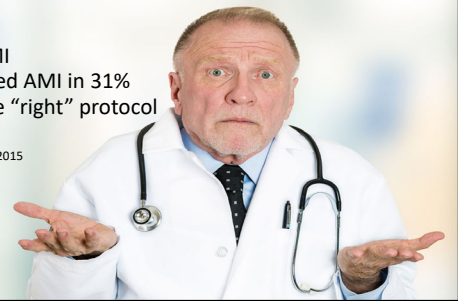


51

Talk to Radiology:

- 95 patients with AMI
- Provider suspected AMI in 31%
- Only 35% had the "right" protocol

Lehtimäki 2015



52

Accuracy of Radiology Report

- Provider suspected AMI: 97%
- Provider did NOT suspect AMI: 81%
  - Higher rates of bowel resection (did worse)

Lehtimäki 2015



53

Call a friend.

- Anticoagulation
- Vasodilation
- Antibiotics
- Surgery
- Interventional Radiology



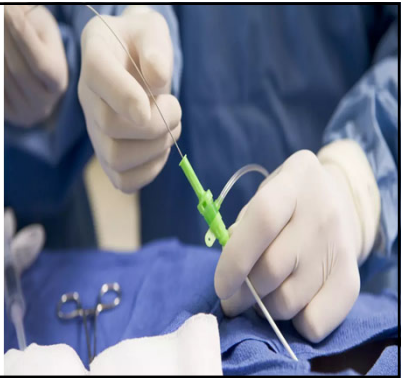
54



55

### Endovascular


- Increasing in popularity
- 2004-2009
  - 12 -> 30% of cases



56

### Endovascular vs. Surgical:

- Worked in 87% of cases
- Mortality:
  - Endovascular: 36%
  - Surgical: 50%

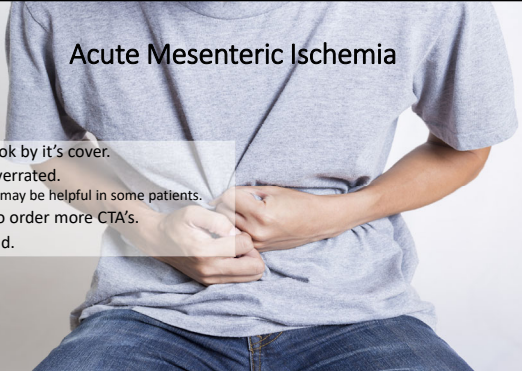


Ryer 2012

57

### Acute Mesenteric Ischemia

- Judge a book by it's cover.
- Labs are overrated.
  - D-dimer may be helpful in some patients.
- We need to order more CTA's.
- Call a Friend.



58